

Municipal Service Review

Fire Protection Agencies in Eastern Plumas County

Prepared for Plumas LAFCo
by
Policy Consulting Associates, LLC

August 8, 2022

1

What is a Municipal Service Review?

In order to prepare and update spheres of influence in accordance with Section 56425, the Commission shall conduct a service review of the municipal services provided in the county or other appropriate area designated by the commission.- Government Code §56430

AB 1744 requires LAFCo to make certain determinations:

- ❖ Present and planned capacity of public facilities and adequacy of public services, including infrastructure needs or deficiencies
- ❖ The Location and Characteristics of Disadvantaged Unincorporated Communities Within or Contiguous to the Agency's SOI
- ❖ Growth and population projections for the affected area
- ❖ Financial ability of agencies to provide services
- ❖ Status of, and opportunities for, shared facilities
- ❖ Accountability for community service needs, including governmental structure and operational efficiencies
- ❖ Any other matter related to effective or efficient service delivery, as required by commission policy.

2

MSR Process

- ❖ Update of relevant data by agency staff
- ❖ Review and update of consistent sections by LAFCo staff
- ❖ Compilation of overview and Governance Structure Options
- ❖ Presentation to LAFCo
- ❖ Release of public review draft
- ❖ Review period for public comments thru Sept. 14
- ❖ Release of draft final with edits based on comments received
- ❖ Public hearing and potential adoption of determinations by LAFCo

3

Agency Profile Outline

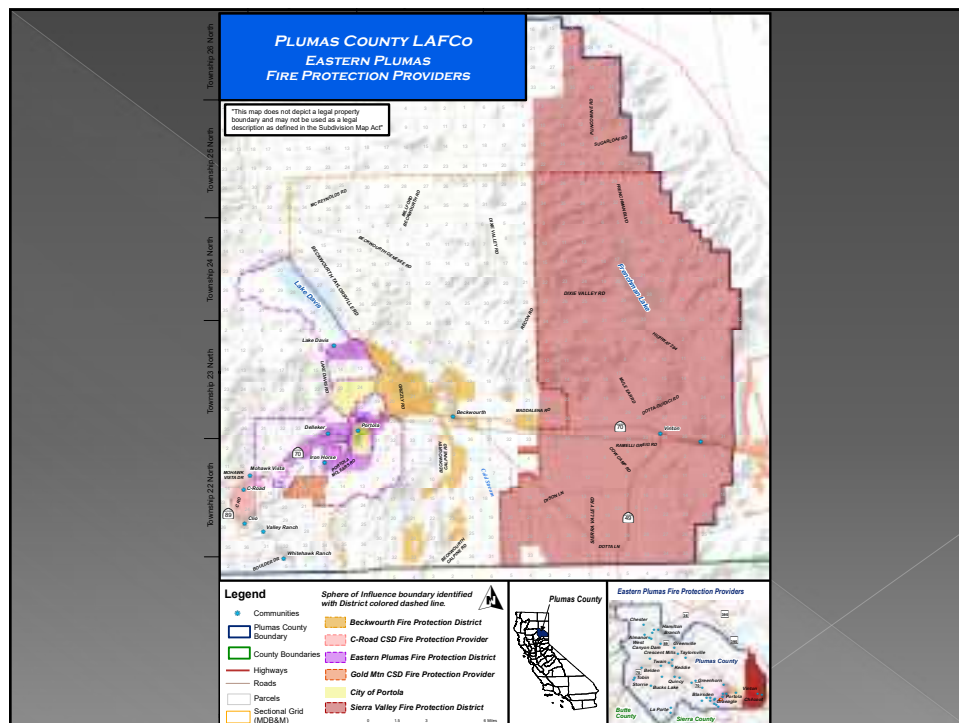
- ❖ Agency Overview
- ❖ Map of Agency
- ❖ Accountability & Governance
- ❖ Planning & Management
- ❖ Existing Demand & Growth Projections
- ❖ Financing
- ❖ Service Specific Sections
- ❖ Determinations

4

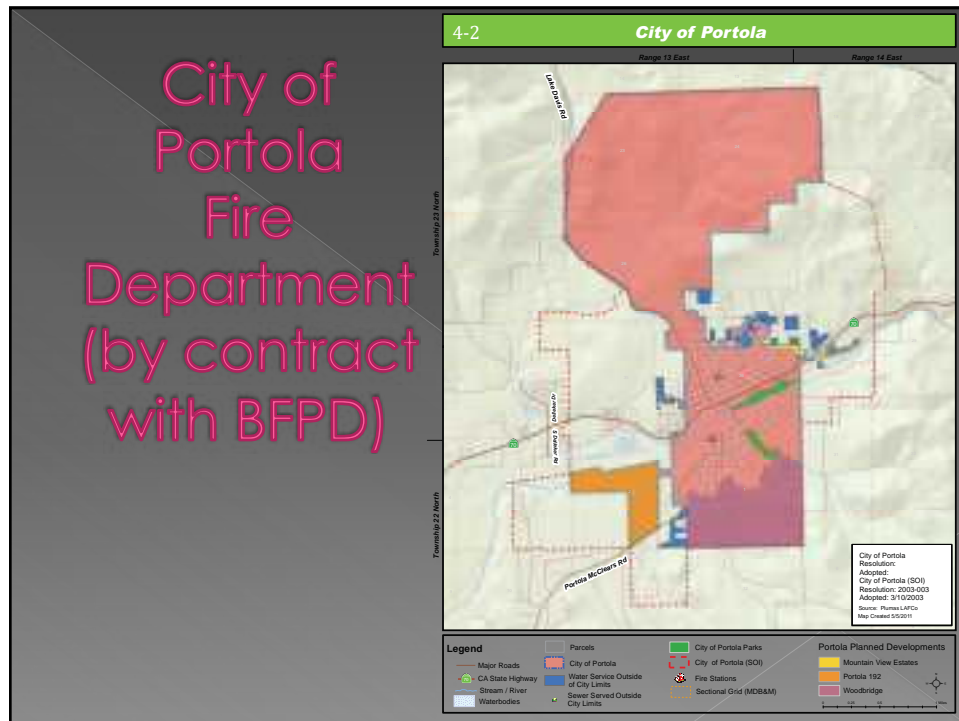
Agencies Reviewed

- ❖ City of Portola
- ❖ Beckwourth Fire Protection District
- ❖ Eastern Plumas Rural Fire Protection District
- ❖ Gold Mountain Community Services District
- ❖ Sierra Valley Fire Protection District

5



6



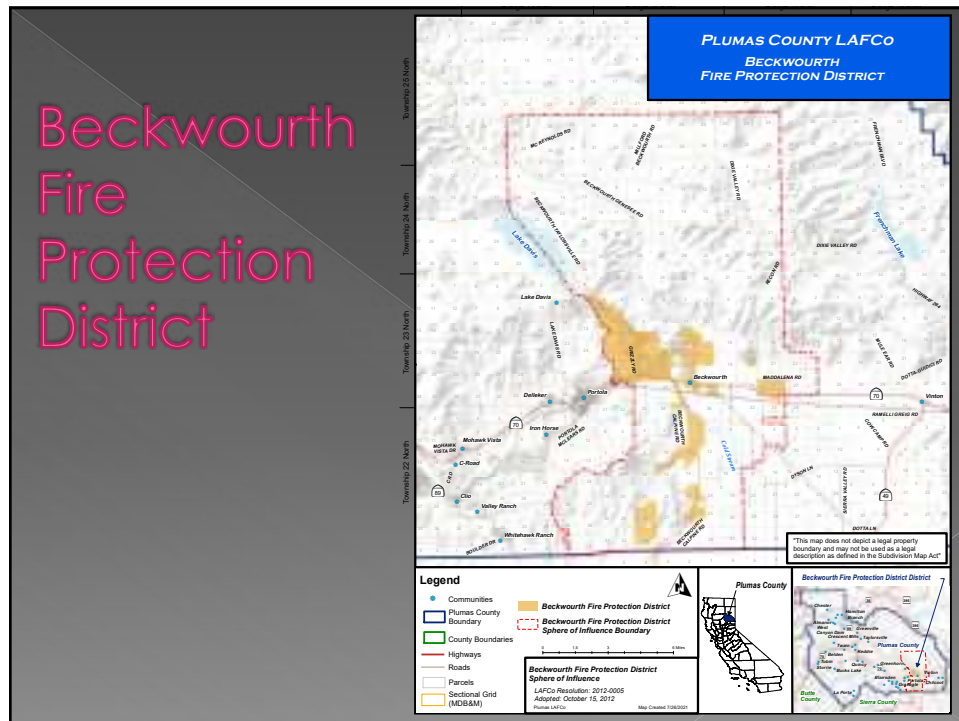
7

City of Portola FD Significant Findings

- ❖ Fire department services have been plagued with many concerns and challenges.
- ❖ Operational deficiencies were the impetus to ceasing FD operations and seeking service structure options.
- ❖ Master and capital planning for fire services has been deficient.
- ❖ Beckwourth FPD is providing outstanding protection for City's area of responsibility.
- ❖ Consistent response time data is necessary for all reviewed agencies.

8

Beckwourth Fire Protection District



9

Beckwourth Fire Protection District Significant Findings

- While financing levels are adequate, there is a shortfall in the capital and repair and replacement programs.
- Continues to pursue and lead efforts for other funding mechanisms.
- Identified need for improved dispatch protocols.
- Portola reports that it is satisfied with the contract services provided.
- Need for accurate tracking of response times for all incidents.

10

11

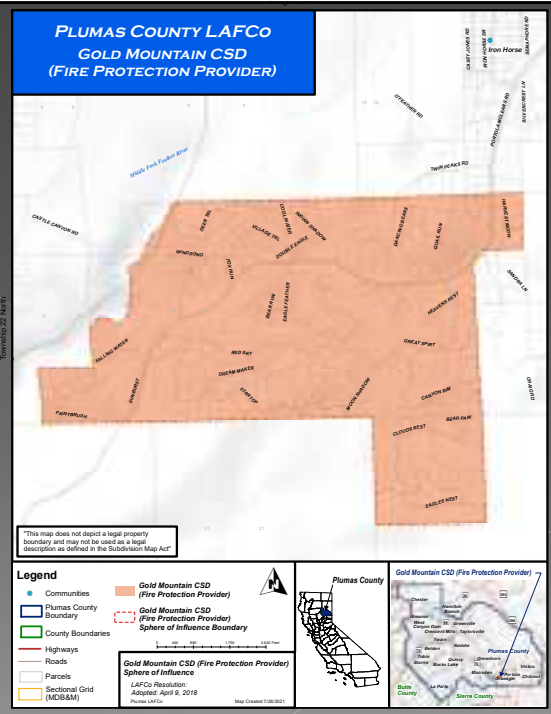
12

Eastern Plumas Rural FPD Significant Findings

- Funding not sufficient to provide an adequate level of services.
- Facing governance and accountability challenges.
- Response to incidents has on occasion been unpredictable and disorganized due to staffing constraints.
- Residents could receive enhanced level of services if included in reorganization.

13

Gold Mountain Community Services District (contract with EPRFPD)



14

- While the District has faced financial difficulties, and anticipates underfunded infrastructure needs, it has conducted solid financial planning and initiated a cost of service rate study.
- Contractor did not meet several contractual obligations in 2021.
- The primary infrastructure constraint is a lack of sufficient fire flow through the District's pressurized water system.
- Assessed several governance alternatives for fire services over the last 10 years.

15

PLUMAS COUNTY LAFCO
SIERRA VALLEY
FIRE PROTECTION DISTRICT

"This map does not depict a legal property boundary and may not be used as a legal description as defined in the Subdivision Map Act"

Communities
Plumas County Boundary
County Boundaries
Highways
Roads
Parcels
Sectional Grid (MDOBAM)

Legend

- Communities
- Plumas County Boundary
- ▭ County Boundaries
- Highways
- Roads
- ▭ Parcels
- ▭ Sectional Grid (MOBAM)

Eastern Plumas Fire Protection District Spheres of Influence
LAFCO Resolution: 2012-005
Adopted: October 16, 2012
Revised LAFCO

Map Created 1/28/2021

Plumas County

Sierra Valley Fire Protection District

Butte County

Sierra County

16

Sierra Valley FPD Significant Findings

- ◉ Most expansive service area of the agencies.
- ◉ Severely financially constrained relying on property taxes and donations.
- ◉ Several unfunded capital improvement and apparatus needs.
- ◉ Staffing levels continue to decline requiring constant recruiting efforts.
- ◉ Provides services to Hallelujah Junction FPD in Lassen County.

17

Fire and EMS Service Challenges

- ◉ Irregular boundaries
- ◉ Serving outside of boundaries without revenue
- ◉ Lack of sufficient funding with increased costs
- ◉ Meeting expanding standards and requirements
- ◉ Disjointed services with lack of consistency
- ◉ Duplication of services (i.e., administration)
- ◉ Divided voices limiting influence
- ◉ Lack of regional planning
- ◉ Reliance almost entirely on volunteers with declining volunteerism
- ◉ Larger and more frequent wildfires

18

Governance Structure Options

- ◉ Status quo or other contract services
- ◉ Joint powers authority/agreement for some or all services
- ◉ Annexation/dissolution
- ◉ Full consolidation
- ◉ Formation of a new regional fire district

19

Benefits to Reorganization

- ◉ Centralized fire planning and provision
- ◉ Better leveraging of resources
- ◉ Consistency in policies and practices
- ◉ Cost savings/efficiencies – elimination of duplications
- ◉ Improved training standards, performance, and incident oversight

20

Challenges to Reorganization

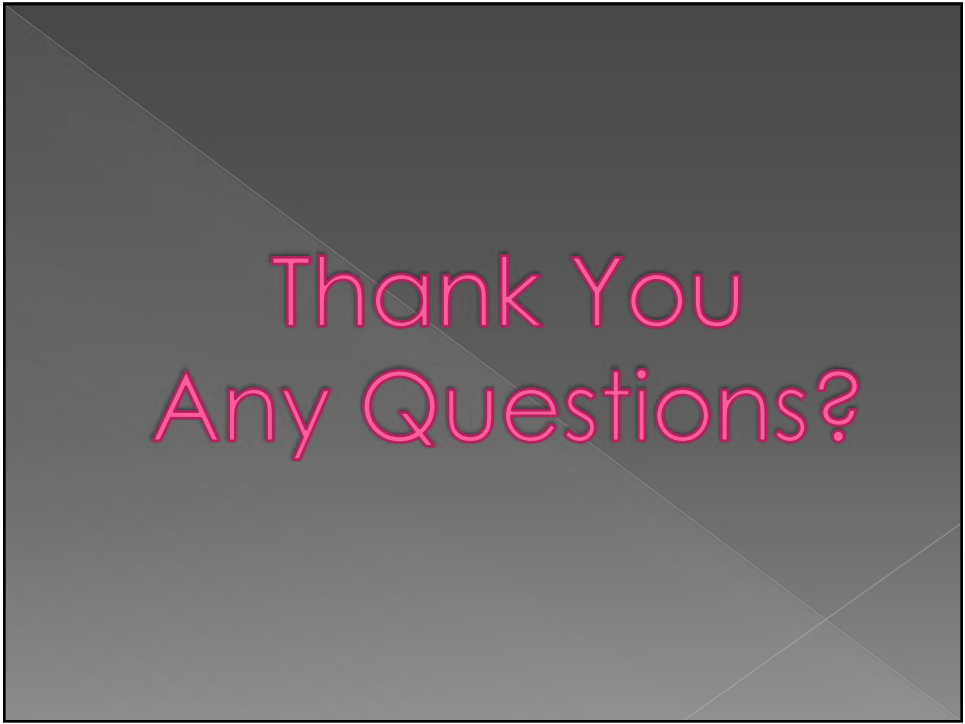
- ◉ Financial differences
- ◉ Ensuring sufficient funding for enhanced services
- ◉ Choosing a successor agency (if consolidation is chosen)
- ◉ Consensus on staffing structure/organization

21

Next Steps

- ❖ Feasibility study is ongoing
- ❖ SOI update will be necessary prior to consideration of application
- ❖ Will require all stakeholder agencies to adopt similar resolutions
- ❖ Application to LAFCo
- ❖ Consideration by LAFCo
- ❖ Election

22



Thank You
Any Questions?

23